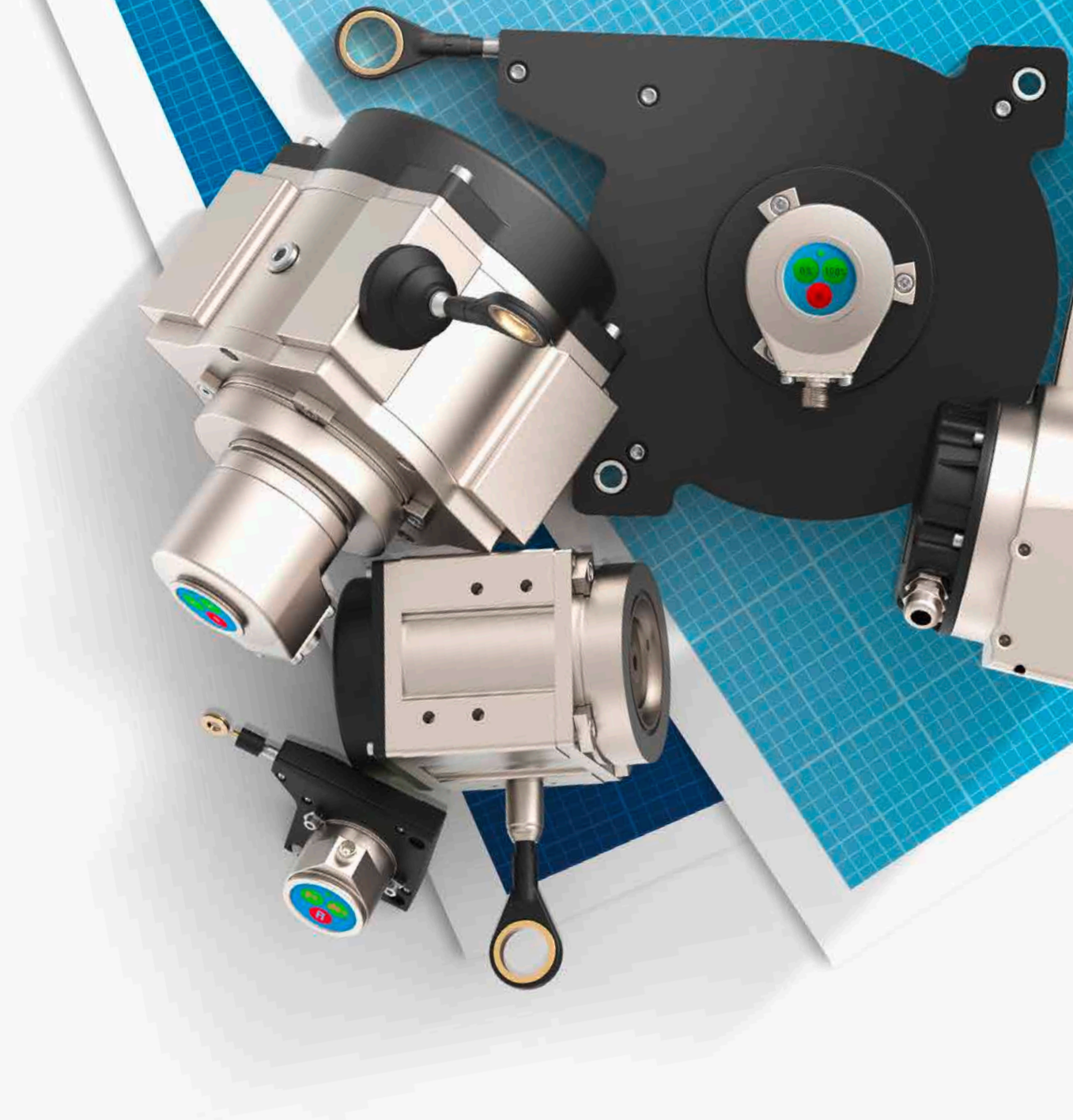




DRAW-WIRE SENSORS

Overview



OUR PRODUCT PORTFOLIO KNOWS NO LIMITS, ONLY POSSIBILITIES.

AS VERSATILE AS YOUR REQUIREMENTS – OUR PRODUCT PORTFOLIO

Do you have any questions about our extensive product portfolio or are you looking for a solution for a special application?

No problem – all our product groups can be easily combined with each other and together with our technical support we will develop the optimal solution specifically for your application.

info@fsg-sensors.de



Rotary Encoders 



Potentiometers 



Inclination Sensors 



Draw-Wire Sensors 



Cable Drums 



Joysticks 



Foot Pedals 



Wind Sensors 

INDUSTRY SOLUTIONS

ANYONE DEVELOPING FOR THE INDUSTRY MUST LEARN FROM THE INDUSTRY.

Every industrial sector has its own language and its own requirements, so there is no one-size-fits-all solution. It is therefore important to us to work with our customers to develop solutions for their individual needs, regardless of which industry they come from. As a result, FSG has been able to develop trust and expertise in all key industries over the decades. Thanks to unconventional approaches, we have often been able to set standards that many industrial sectors cannot be imagined without to this day. Today our components are trademarks for quality and innovation in many branches of industry.

THE RIGHT SOLUTION FOR EVERY INDUSTRY.



Construction machine



Ship



Rails



Logistics



Offshore



Medicine



Industry



Energy



Transport



Automation



Agricultural



Mining



A small selection of our Industry opportunities

We feel at home in every industry.

Therefore, we can answer any question about our products and together we will find solutions to your ideas.

Contact us!

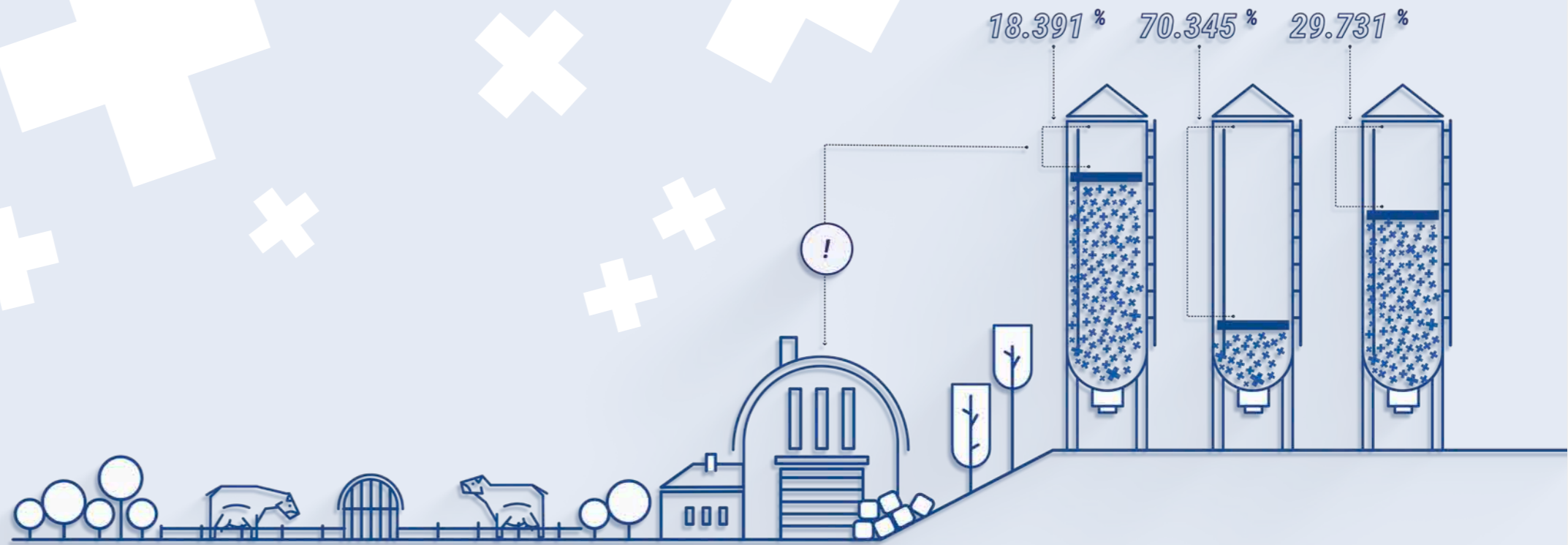
 info@fsg-sensors.de

DRAW-WIRE SENSORS

For length measurements in agricultural machines or vehicles, FSG cable-pull sensors are of great importance. With their robust construction, single-layer cable winding, and stable spring retraction, they meet all the requirements for reliable and long-lasting data acquisition.

With measuring ranges from 0–100 mm up to 30 m, their usage enables precise measurement and ensures higher work efficiency and improved safety in all agricultural operations.

- Robust construction for extreme environments
- High accuracy using threaded spindle



DRAW-WIRE SENSORS PREMIUM-Series

Available with the following signal outputs:

4–20 mA / 0–10 V
CAN / CANopen / CANopen-safety
J1939

Other special features:

- High operational reliability and measuring accuracy
- Extensive accessories
- V4A version available
- Winding takes place in a single layer
- Robust, highly flexible steel cables
- Drum with threaded spindle for measuring lengths up to 60 m



SL3000-GS80
PREMIUM-Series
Measuring length: up to 3 m



SL3000-GS130
PREMIUM-Series
Measuring length: up to 30 m

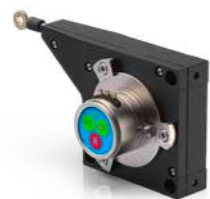


SL3000-GS190
PREMIUM-Series
Measuring length: up to 60 m

DRAW-WIRE SENSORS BASIC-Series



SL001250-GS55
BASIC-Series
Measuring length: up to 1,25 m



SL003000-GS80
BASIC-Series
Measuring length: up to 3 m



SL005000-GS130
BASIC-Series
Measuring length: up to 5 m



SL0010-GS190
BASIC-Series
Measuring length: up to 10 m

DRAW-WIRE SENSORS Special-Version / Heavy Duty



SL0-GS125
Special-Version
Measuring length: up to 10 m



SL04-GS160
Special version with rope brake
Measuring length: up to 4 m

DRAW-WIRE SENSOR Robust and flexible

NEW

SL00R-GS80
Measuring length: up to 3 m



Special features:

- thicker measuring rope (0.81mm instead of 0.55mm for BASIC-Series)
- 50% higher retraction force (compared to BASIC-Series)
- Robust metal housing
- Variable construction concept Rope exit possible from both sides of the housing (realization of right or left version)
- Flexible mounting of standard encoders possible
- variable mounting by additional pulleys horizontal / vertical



SL004-GS-170
Special-Version
Measuring length: up to 12 m



SL5-20-GS190
HEAVY DUTY
Measuring length: up to 20 m

QUALITY & RELIABILITY 

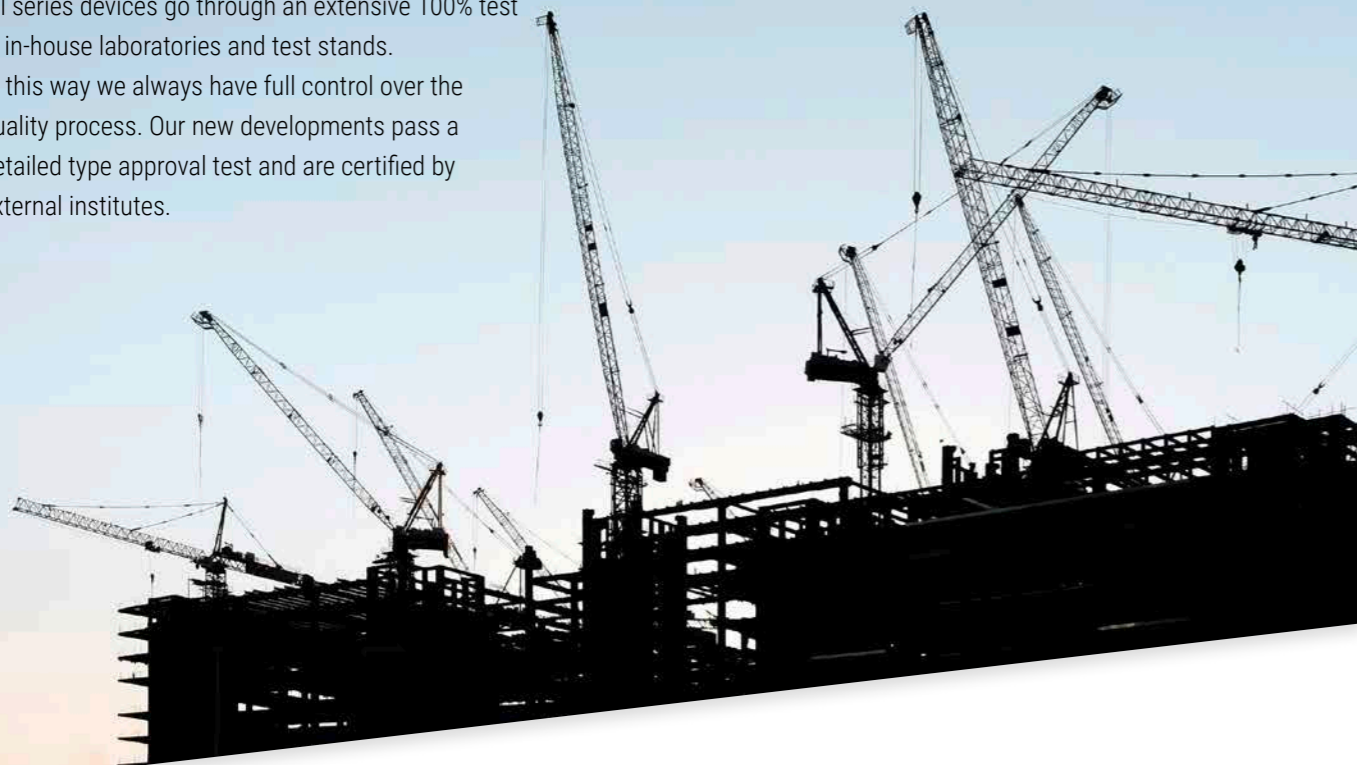
WE LEAVE NOTHING TO CHANCE.

When it comes to quality, there are no compromises for FSG – regardless of when and where our devices are in use worldwide. Maximum reliability and seamless readiness for action are our top priority.

We will develop and manufacture all of our products for a long sensor life for every condition.

All series devices go through an extensive 100% test in in-house laboratories and test stands.

In this way we always have full control over the quality process. Our new developments pass a detailed type approval test and are certified by external institutes.



With us you are always on the safe side through:



OUR DAY-TO-DAY BUSINESS: MAKING A DIFFERENCE.

OUR FIVEFOLD PROMISE OF PERFORMANCE

90% depth of production, 100% passion



Due to 90% vertical integration, we can customize our products 100% to your needs.

4 plants, one location: Germany



Every day, over 470 employees ensure that you are satisfied and that „Made in Germany“ continues to stand for quality.

Our standard: customization



FSG products are not only excellent, they are always perfectly designed and customized for your requirements.

75 years of innovation is tradition



We will develop measurement sensors that are reliable and perfectly matched to their intended use. Our solutions often become industry innovations – and have been for 75 years.

Always where our customers are



FSG is represented internationally and we guarantee you the best support, no matter when and where you need us.



Our competence – for your satisfaction.

Together we will find the sensor solution that is specially tailored to your needs.

I look forward to your ideas and visions.

S. KÖNIG SALES MANAGER

info@fsg-sensors.de



MANUFACTURING & PRODUCTION

Nowadays, there is a constant demand by customers for more complex solutions of automation problems which have to go into serial production at short notice. With CAD workstations in the development department and drafting offices and with CNC machines in use in steel construction, production, and in assembly, we have established the necessary conditions for rapid product realization ready to go into serial production. Each step of production is watched and controlled by our own quality management according to the guidelines of DIN EN ISO 9001:2015.



PAINTWORK

SCIENTIFIC & RESEARCH

Having its focus of development at the heart of Berlin, FSG has two additional locations in Königs Wusterhausen near Berlin. Specific customer requirements and requests are realized at all sites. Forward-looking tendencies and developments were analysed and regarding their feasibility be examined and tested.



TEST LAB & QUALITY MANAGEMENT

Our development, test and EMC departments are equipped with state of the art computer-aided technical equipment and facilities. Related and required functional tests can be carried out practise-orientated and tests to ensure compliance with EMC goals be simulated. Automated test stations are used to control and record the guaranteed functional characteristics of every single device before delivery. In the process we never lose sight of customer requirements as well as statutory standards and safety guidelines. The results of each final inspection are saved and archived electronically.



CALIBRATION LABORATORY



TEST BENCH

DISTRIBUTION NETWORK

DISTRIBUTION MEANS TRUST. THAT'S WHY WE ONLY TRUST THE BEST.

Through the international orientation of our company and the consistent expansion of new sales structures and opportunities, we offer our global customers a presence close to the market of specialists for measurement and sensor technology from FSG Fernsteuergeräte.

EUROPE

Germany - Headquarters

FERNSTEUERGERÄTE Kurt Oelsch GmbH

+49 30 6291-1
sales@fsg-sensors.de
www.fsg-sensors.de

Finland

FISEG Oy

+358 50 5726268
aki.luukkainen@fiseg.fi
www.fiseg.fi

France

ICA systèmes Motion

+33 390 226683
info@icacontact.fr
www.icacontact.fr

Italy

MILEXIA ITALIA S.p.A.

+39 24 81900
info@milexia.it
www.milexia.com

Netherlands / BEL / LUX

Batenburg Applied Technologies

+31 10 2928787
controllers-sensors@batenburg.nl
www.batenburg-appliedtechnologies.nl

Norway

Elteco AS

+47 35 562070
ci@elteco.no
www.elteco.no

Sweden

Emcomp International AB | Pulsteknik Branch

+46 702277811
andreas.anselmus@pulsteknik.se
www.emcomp.se
www.pulsteknik.se

Switzerland

Omni Ray AG

+41 44 8022737
m.leemann@omniray.ch
www.omniray.ch

Spain

Electromediciones Kainos, S.A.U.

+34 93 4742333
sballus@kainos.es
www.kainos.es

Czech Republic

SCHMACHTL CZ spol. s r.o.

+420 244 001 500
office@schmactl.cz
www.schmactl.cz

Austria

Schmactl GmbH

+43 732 7646-0
j.petschl@schmactl.at
www.schmactl.at

INTERNATIONAL

North and South America

FSG Sensors Inc.

+1 207 480-3173
sales@fsg-sensors.com
www.fsg-sensors.com

South Africa

Mecosa (Pty) Ltd.

+27 11 257-6100
measure@mecosa.co.za
www.mecosa.co.za

India

Manglam Electricals

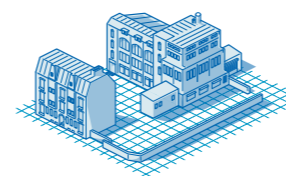
+91 11 23942222
karn.shanker@manglamelectricals.com
www.manglamelectricals.com

OUR LOCATIONS

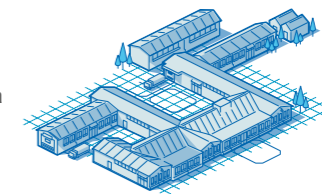
EVERYTHING A QUESTION OF THE LOCATION

Our employees are the DNA of our success. Spread over 4 locations, they are responsible for FSG developing individual and professional solutions and products for its customers. To ensure that this path to success is not interrupted, we promote our employees and invest heavily in our machinery. This is the only way to guarantee that we will still be where we are today - **always at the top.**

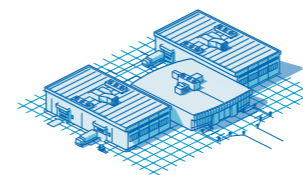
YOU CAN FIND US AT THE FOLLOWING LOCATIONS

**BERLIN****Headquarters**

- founded in 1946
- approx. 3,500 m² production area
- approx. 200 employees
- Management and sales,
- design and development,
- production and assembly

**KABLOW/ BRANDENBURG****Development, production and assembly**

- founded in 1992
- approx. 5.000 m² production area
- approx. 150 employees
- development, construction and assembly

**ZERNSDORF/ BRANDENBURG****production and training center**

- founded in 2017
- approx. 4.300 m² production area
- approx. 90 employees
- Training center
- Production

**HEPPENHEIM/ HESSEN****Fertigung und Montage**

- founded in 1961
- approx. 2.500 m² production area
- approx. 40 employees
- production and assembly

IMPRINT

Publisher

FERNSTEUERGERÄTE Kurt Oelsch GmbH
Jahnstraße 68 + 70, 12347 Berlin

Editing and responsible for content

Carsten Schulz (gemäß § 18 Abs. 2 MStV)

Copyright

All contents, in particular texts, photographs and graphics are protected by copyright.

All rights, including reproduction, publication, editing and translation, are reserved by FERNSTEUERGERÄTE Kurt Oelsch GmbH.

Guarantee

The contents were created with the greatest possible care. However, FERNSTEUERGERÄTE Kurt Oelsch GmbH does not guarantee the accuracy, completeness and timeliness of the content provided.



WE
MEASURE
CONTROL
REGULATE
IT

 **BERLIN (HQ)**

Fernsteuergeräte
Kurt Oelsch GmbH
Jahnstraße 68 + 70
12347 Berlin

fon +49 30 6291-1
fax +49 30 6291-277

info@fsg-sensors.de
www.fsg-sensors.de

