

SINGLE AXIS SENSOR PREMIUM-SERIES

PE-MH1023-II-MU-i-IECEEx

Robust inclination sensor with safety-relevant features

- Pendulum system, oil-damped
- Inclination angle 0°–360°
- Robust stainless steel housing

CE – konform



TECHNICAL DATA

Measuring system	magnetic via pendulum	Signal output	4–20 mA
Housing design	1023	Load current	max. 500 Ω
Housing material	stainless steel	Resolution	14 bit
Housing size	63 mm	Supply	9–26 V DC
Housing high	60 mm	Current consumption	max. 20 mA
IP code of housing up to	IP67	Temperature range	-20 °C up to +60 °C
Connection*	cable	Temperature coefficient	<0.03° / K
Weight	1200 g	EMV*	ISO 13766-1/-2, EN 61000-6-2/-19
Data logging	pendulum system	Vibration*	5–150 Hz, 2 g
Tilt angle	max. -180.0° -179.9°	Shock*	25 g, 6 ms
Angular accuracy	±0.2°		
Version	redundant		

Optional:
IECEEx approval, SIL-compliant

**Depending on customer specifications.*

Article master number 5790Z03

Typical APPLICATION AREAS



Ship



Rails



Construction machine



Logistics



Medicine



Industry

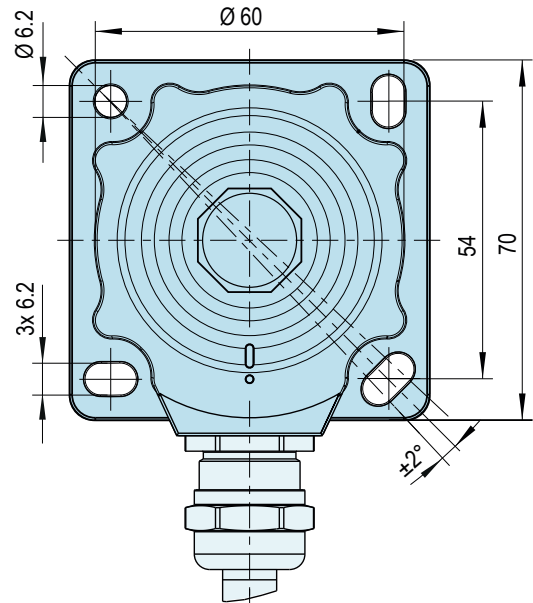
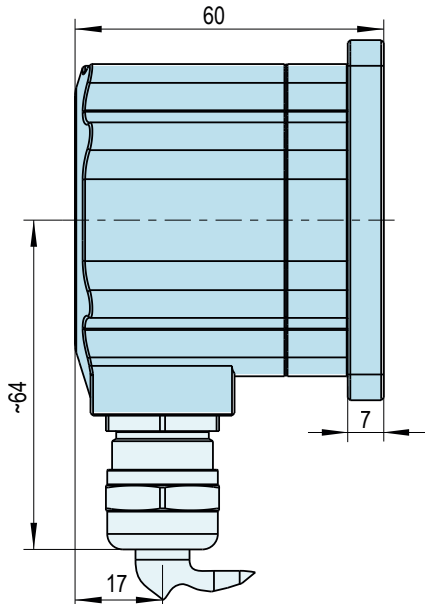
You can find more information about our inclination sensors here: fsg-sensors.de/neigungssensoren



SINGLE AXIS SENSOR PREMIUM-SERIES

PE-MH1023-II-MU-i-IECEX

DIMENSIONAL DRAWINGS



CONNECTION

MH1023-MU-Ex-IECEX

Signal output: 4-20 mA

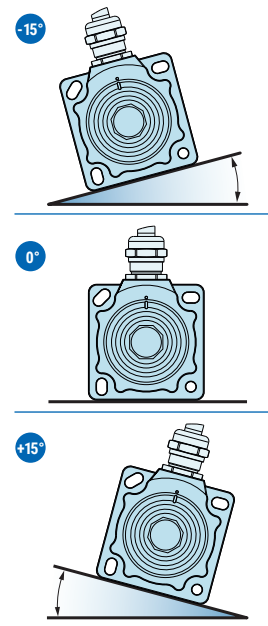
PIN	Assignment
BU	Supply: 24 V DC
BK	Output: 4-20 mA

Legend

BK - black | **BU** - blue

MOUNTING POSITION

X-axis max. 0-360°



CONTACT

If you have any questions about this or any other FSG product, please do not hesitate to contact us.

BERLIN (HQ)
Fernsteuergeräte Kurt Oelsch GmbH
Jahnstraße 68 + 70
12347 Berlin

✉ info@fsg-sensors.de
🌐 www.fsg-sensors.de
☎ +49 30 6291-1
📠 +49 30 6291-277

© Fernsteuergeräte Kurt Oelsch GmbH
No guarantee for the correctness, completeness of the contents. The product illustration may differ from original.